

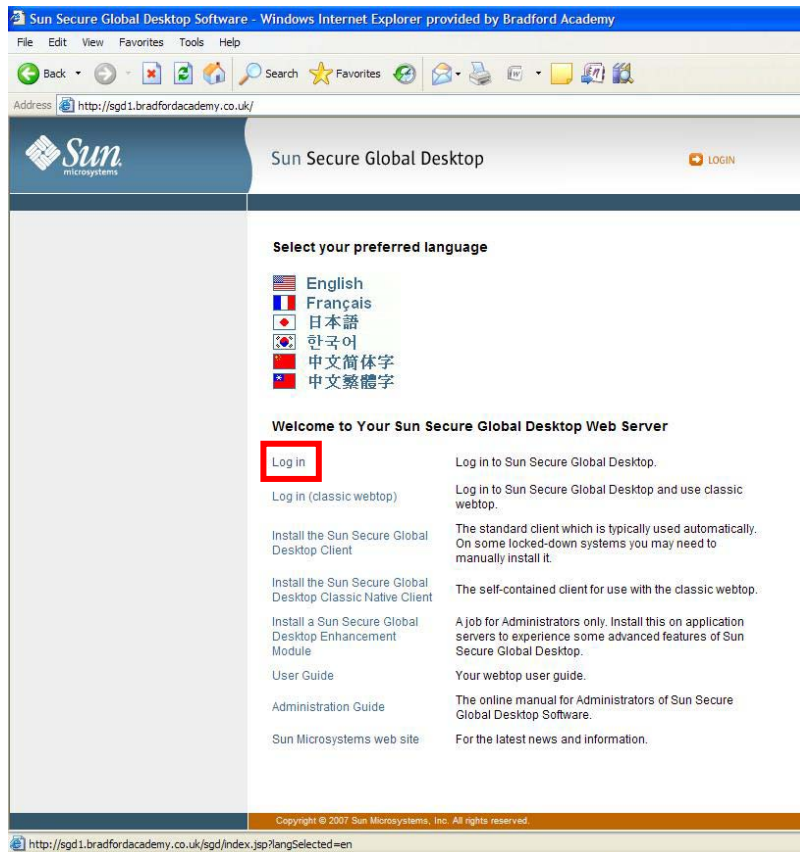
Logging on remotely to the school network

On Internet Explorer type in:

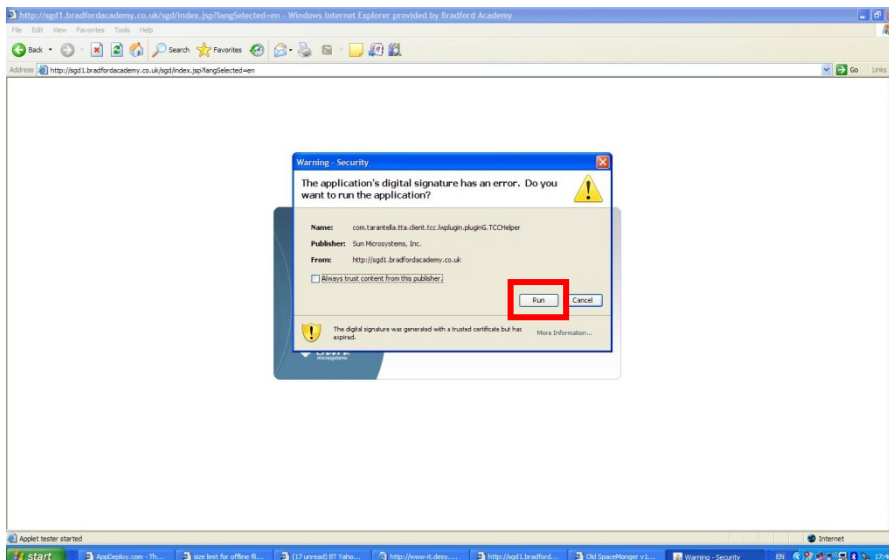
<http://sgd1.bradfordacademy.co.uk> Or

<http://sgd2.bradfordacademy.co.uk>

Step 1: Select 'Log in'



Step 2: If the following window appears, select 'run'.



Step 3: Enter your username and password as you would when logging on to a laptop or PC at the Academy when you see the window below.

A login window titled "Sun Secure Global Desktop". It has a blue header bar with the title. Below the header, there are two input fields: "Username" with the text "m.berry" and "Password" with a masked password of six dots. At the bottom left is the Sun Microsystems logo, and at the bottom right is a "LOGIN" button.

sgd1.bradfordacademy.co.uk

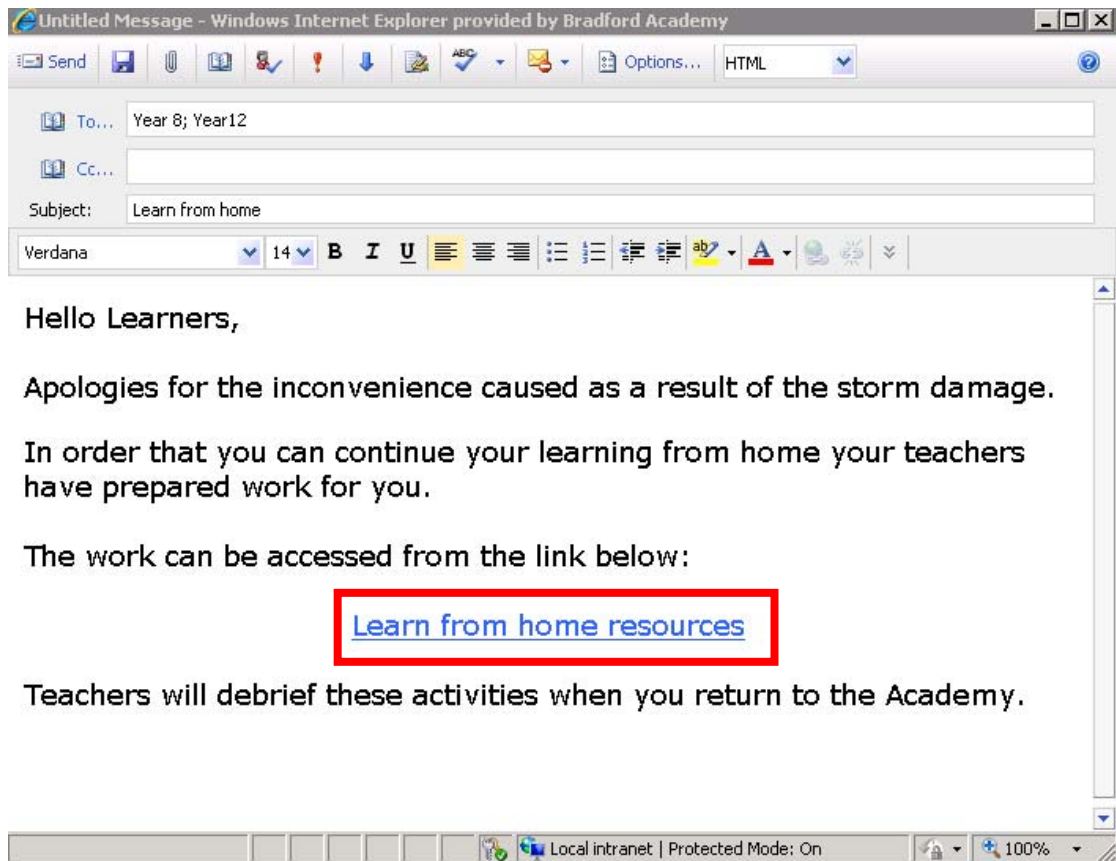
Step 4: When you get to the screen below click on 'Full Screen Windows' on the left hand side.



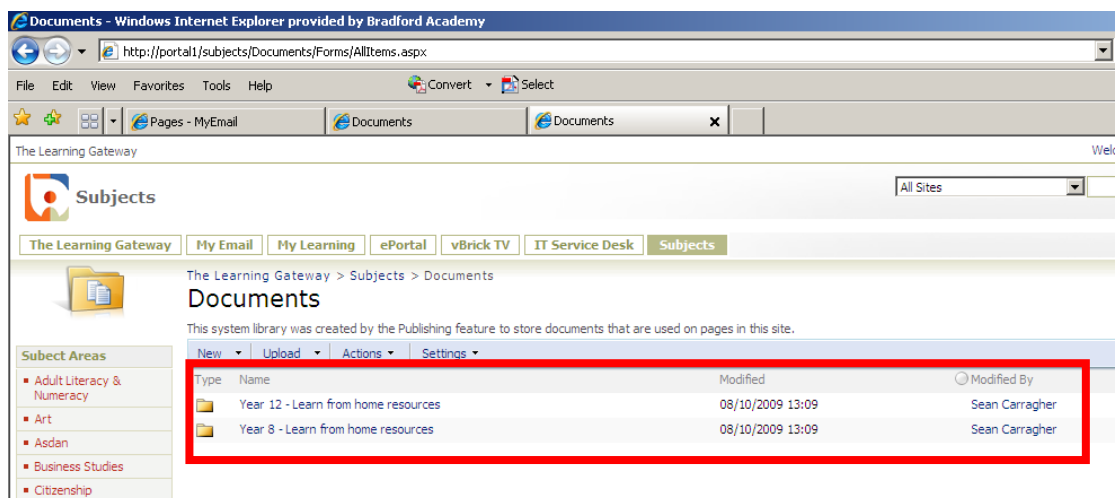
You will then be connected to a server within the building. This will allow you to access your email and 'The Learning Gateway'.

Accessing the learning materials

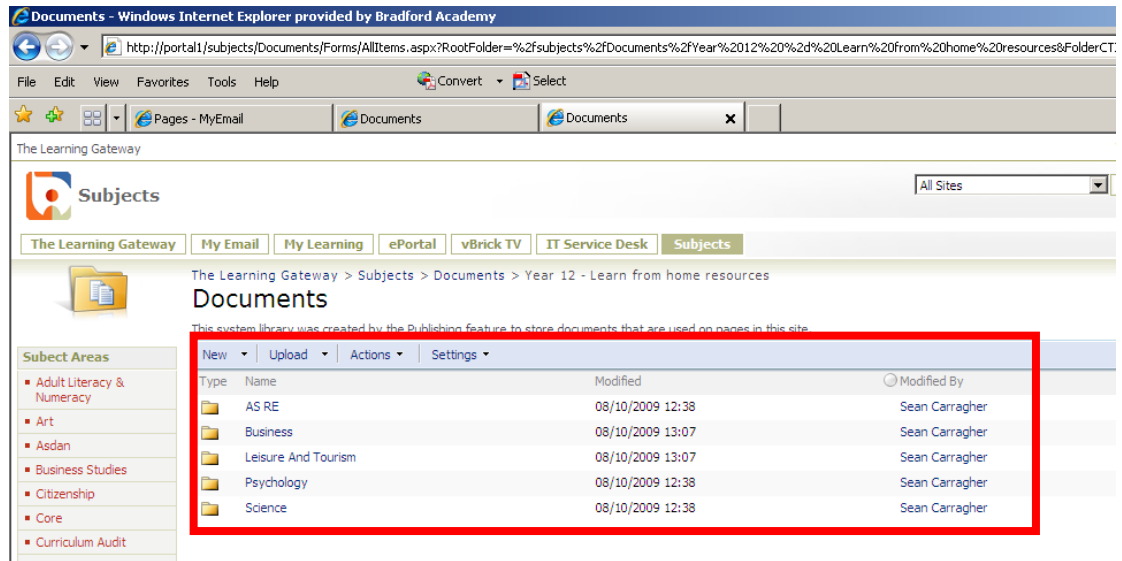
Once you are logged on remotely, open your email with the subject Learn from home and click on the link (see the example below):



Then Select your year group:



Then select the subject you wish to study:



The Learning Gateway

Subjects

The Learning Gateway > Subjects > Documents > Year 12 - Learn from home resources

Documents

This system library was created by the Publishing feature to store documents that are used on pages in this site.

Type	Name	Modified	Modified By
Folder	AS RE	08/10/2009 12:38	Sean Carragher
Folder	Business	08/10/2009 13:07	Sean Carragher
Folder	Leisure And Tourism	08/10/2009 13:07	Sean Carragher
Folder	Psychology	08/10/2009 12:38	Sean Carragher
Folder	Science	08/10/2009 12:38	Sean Carragher

Subject Areas

- Adult Literacy & Numeracy
- Art
- Asdan
- Business Studies
- Citizenship
- Core
- Curriculum Audit